

RINA DIRISIO
REAL ESTATE, BUT BETTER



1483 THE LINKS DRIVE

OAKVILLE, ON



A GENUINE LIFESTYLE UPGRADE AWAITS IN GLEN ABBEY'S PRESTIGIOUS FAIRWAY HILLS COMMUNITY. NESTLED ALONG THE ICONIC GLEN ABBEY GOLF COURSE.

This executive residence has been transformed from top to bottom with luxurious, high-end upgrades, offering a turnkey experience where all you need to do is move in and indulge. Striking curb appeal greets you with meticulous landscaping, stamped concrete driveway, mature trees, and a refreshed exterior façade. Step into the backyard and discover a private resort-like oasis featuring an expansive stamped concrete patio surrounding a custom inground pool, complemented by a soothing hot tub framed by lush gardens, mature trees and a charming cabana.

Crafted by Glen Orchard, this impressive, extensively renovated (August 2024) home boasts 4+1 bedrooms, 4.5 bathrooms, and approximately 3,414 sq. ft. of sophisticated living space, including a professionally finished lower level. Refined details abound—wide-plank white oak hardwood floors, 8” baseboards, designer tilework, crown mouldings, three fireplaces, custom built-ins, an elegant, refinished staircase, and a wealth of pot lighting. Entertain in style in the gracious living and formal dining rooms or unwind in the expansive family room. The chef-inspired kitchen is a masterpiece, showcasing custom cabinetry with ambient lighting, sleek quartz counters and backsplash, high-end Jenn-Air appliances and a 6-burner Wolf gas range, and a large island with a wrap-around breakfast bar in a sunlit breakfast area that opens to the serene backyard retreat. An outstanding laundry room and separate mud room with custom cabinetry, inside entry to the garage and an elegant powder room complete the main level. Upstairs, four bright bedrooms and three spa-like bathrooms await, including the opulent primary suite with custom cabinetry and a luxurious 5-piece ensuite featuring a sculpted soaker tub and oversized glass shower. The finished lower level offers endless entertainment possibilities with a sprawling recreation room, fireplace, wet bar, and games area, along with a private guest bedroom and full bath.

A transformative \$500K renovation, completed in August 2024, reimagined the entire main and second floors with a complete redesign and rebuild. Walls were removed to create a more open, flowing layout, and every element was renewed with exquisite finishes. No detail was overlooked—luxurious new bathrooms, wide-plank, white oak flooring, 8” baseboards, a striking wood staircase, smooth ceilings, designer lighting, a custom kitchen, as well as new interior and exterior doors and windows. At the same time, the home received practical upgrades with new roof shingles, and the pool was refreshed with a new liner and cover, ensuring both style and peace of mind for years to come.

Welcome to Glen Abbey—a community celebrated for its scenic nature trails, top-ranked schools, and proximity to urban conveniences, not to mention the world-renowned Glen Abbey Golf Course. Enjoy quick access to Dorval Crossing for dining, shopping, and services in just 4 minutes, and commuters will appreciate being only 5 minutes to the QEW/403, 8 minutes to the GO Train, and 10 minutes to the 407 ETR.



FOYER (12'7" X 17'3")

- Single door entry with full-panel glass insert and sidelights
- Smooth ceilings with pot lights and crown mouldings
- Upgraded casings and 8" baseboards throughout
- Upgraded wide-plank, white oak hardwood floor
- Upgraded spiral hardwood staircase with deluxe iron pickets
- Upgraded interior and exterior doors and hardware
- Double-door closet





LIVING ROOM (18'0" X 11'4")

- Crown mouldings
- Gas fireplace with a classic white mantel
- Upgraded wide-plank, white oak hardwood floor
- Pot lights
- Two large windows



DINING ROOM (18'0" X 11'3")

- Crown mouldings
- Custom built-in cabinetry
- Upgraded wide-plank, white oak hardwood floor
- Sleek chandelier
- Large window with designer drapes

BRIGHT KITCHEN



KITCHEN (20'4" X 16'4")

- Extensive white custom cabinetry
- Extended-height upper cabinets with crown mouldings, over and under lighting
- Upper china cabinets
- Double-door pantry
- Huge island with waterfall feature, a breakfast bar with seating for five, and pendant light overhead
- Quartz counters and a matching slab backsplash
- Pot lights
- Upgraded wide-plank, white oak hardwood floor
- High-end stainless steel appliances, including a French door fridge, built-in dishwasher, and a Wolf 6-burner gas range with a downdraft range hood fan
- Generous breakfast area with upgraded sliding glass doors to the backyard oasis





FAMILY ROOM (20'2"X 12'1")

- Gas fireplace with a classic white mantel
- Upgraded wide-plank, white oak hardwood floor
- Dramatic feature wall
- Numerous pot lights
- Huge window overlooking the patio and pool



BATHROOM (2-PIECE)

- Vanity with an under-mount sink
- Upgraded wide-plank, white oak hardwood floor
- Crystal chandelier

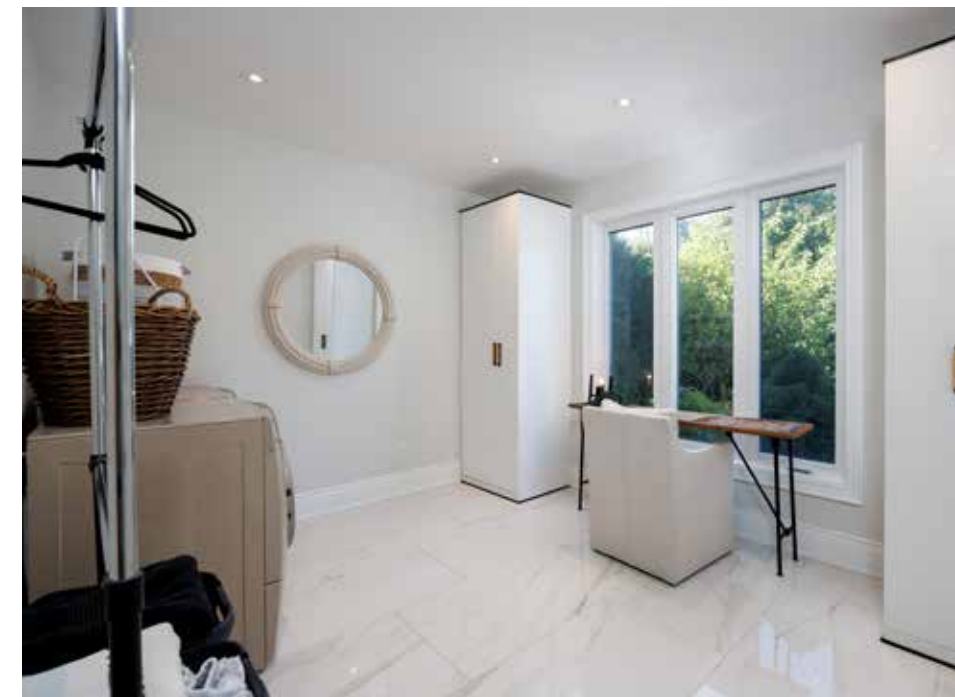


MUDROOM (5'9" X 9'1")

- Custom, built-in cabinetry, including a bench seat
- Oversized marble-look porcelain floor tiles
- Exterior door to the side yard
- Inside entry to the attached double garage

LAUNDRY/SITTING AREA (10'5" X 12'8")

- Upgraded oversized marble-look porcelain floor tiles
- Custom, built-in cabinetry
- Pot lights
- Extra-large window with pool and treetop views



SECOND LEVEL



PRIMARY BEDROOM (19'8" X 24'10")

- Double entry doors
- Pot lights, ceiling fan, and sleek bedside pendant lighting
- Upgraded wide-plank, white oak hardwood floor
- Upgraded 8" baseboards
- Custom, built-in wardrobes and coffee station/servery cabinets
- Large bay window grouping with pool and treetop views

ENSUITE BATHROOM (5-PIECE)

- Custom, white cabinetry with a built-in makeup desk
- Quartz counters with two under-mount sinks
- Pot lights and pendant lighting
- Oversized porcelain floor tiles
- Upgraded freestanding solid soaker tub
- Oversized shower with upgraded tile surround, built-in flush mount rain shower head, additional sliding shower diverter, and frameless glass enclosure
- Three windows with treetop views
- Water closet for the toilet





BEDROOM 2 (11'9" X 11'11")

BEDROOM 3 (11'3" X 11'11")

BEDROOM 4 (14'7" X 16'7")

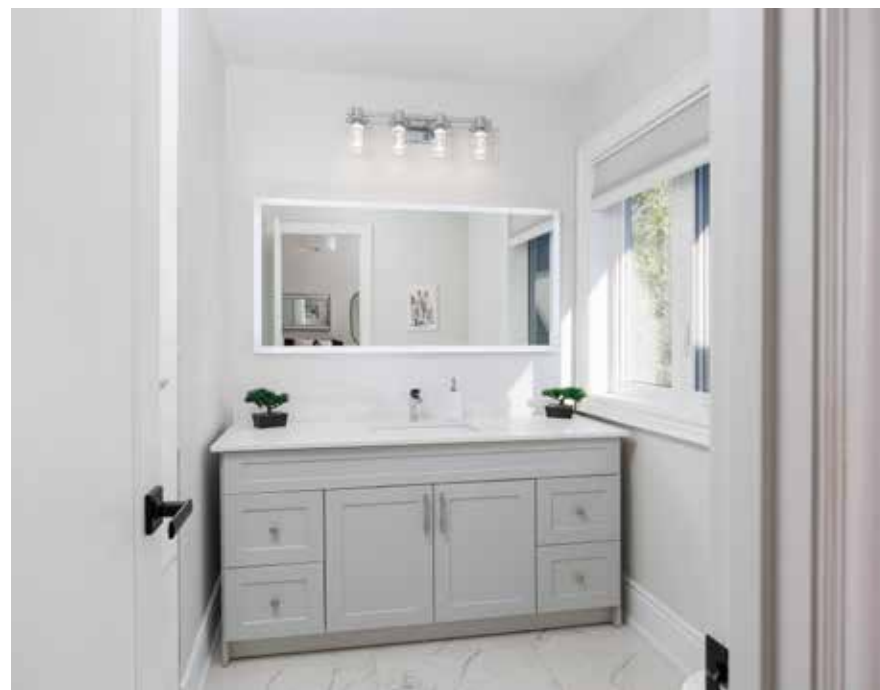
- Three additional bright bedrooms on the second level feature upgraded wide-plank, white oak hardwood flooring, upgraded deep baseboards, large windows, pot lights, and ample closet space. One of the bedrooms has a dedicated 3-piece ensuite bathroom.





BATHROOM (3-PIECE) BATHROOM (4-PIECE)

- Both beautifully renovated bathrooms offer custom cabinetry, quartz counters with undermount sinks, porcelain tiles and glass-encased showers with rain shower heads and additional spray wands.



LOWER LEVEL



RECREATION ROOM (42'10" X 25'9")

- Pendant lighting and numerous pot lights
- Gas fireplace with a striking wood-slat mantel
- Custom, built-in cabinetry and display shelves
- Wide-plank, vinyl flooring
- Eight-inch baseboards
- Custom, built-in wet bar with seating for four
- Huge games area



BEDROOM 5 (19'3" X 13'7")

- Wide-plank, vinyl flooring
- Eight-inch baseboards
- Fireplace
- Pot lights
- Window

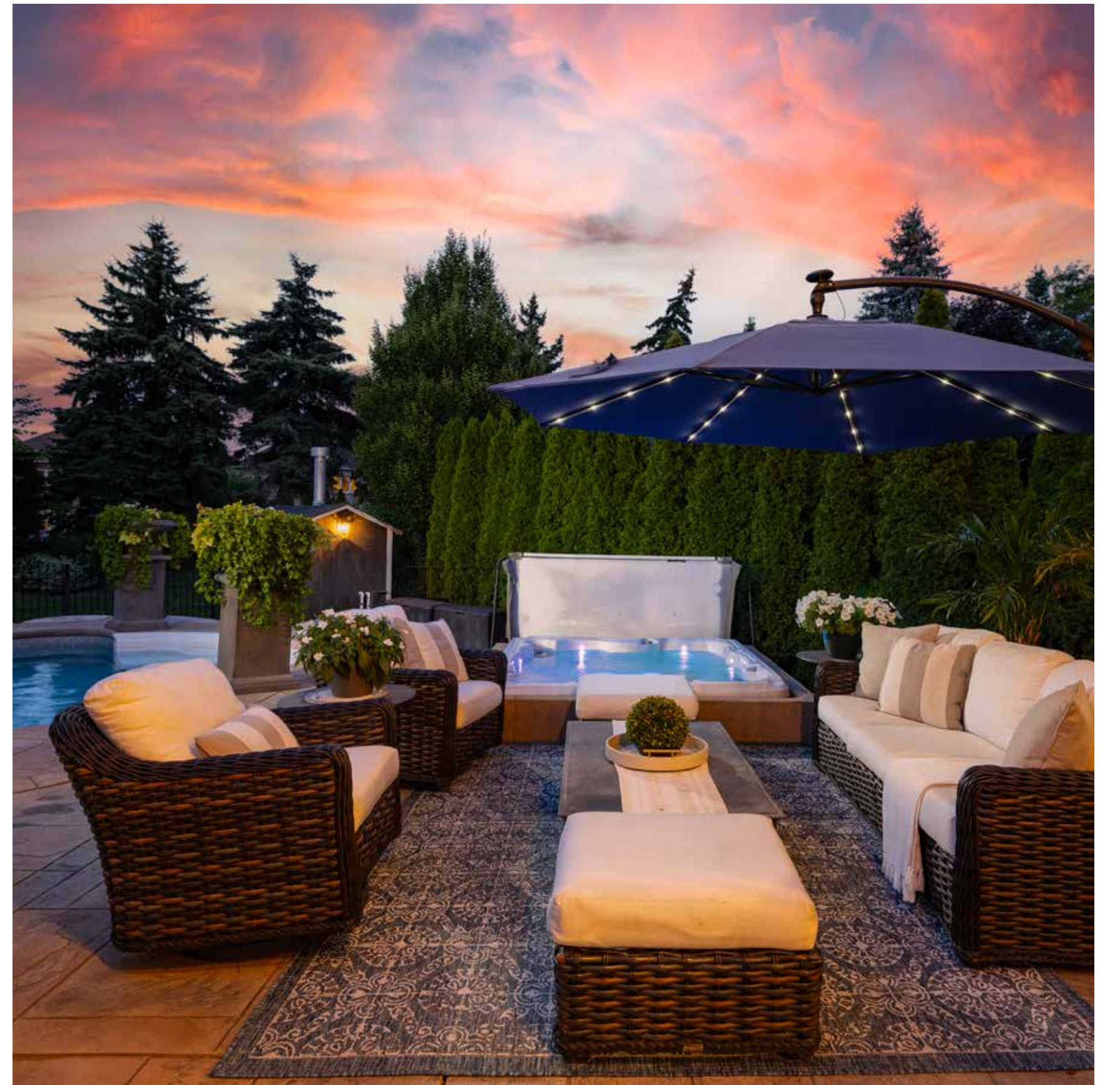


BATHROOM (3-PIECE)

- Upgraded cabinetry with a stone counter and an upgraded vessel sink
- Travertine floor tiles
- Corner shower with a glass enclosure







SCHOOLS

Elementary

Abbey Lane – English Track – JK - GR08
Pilgrim Wood – FI – GR02 – 08
St. Teresa of Calcutta CES – Regular Track – JK – GR08
St. Mary CES – FI – GR01 – 08
St. Bernadette CES – ExF – GR05 - 08

Secondary

Abbey Park – English Track – GR09 – 12
Thomas A. Blakelock – FI – GR09 – 12
St. Ignatius of Loyola CSS – Regular Track/FI/ExF – GR09 - 12



Taxes: \$10,692/2025

Lot Size: 65.95 x 121.39ft

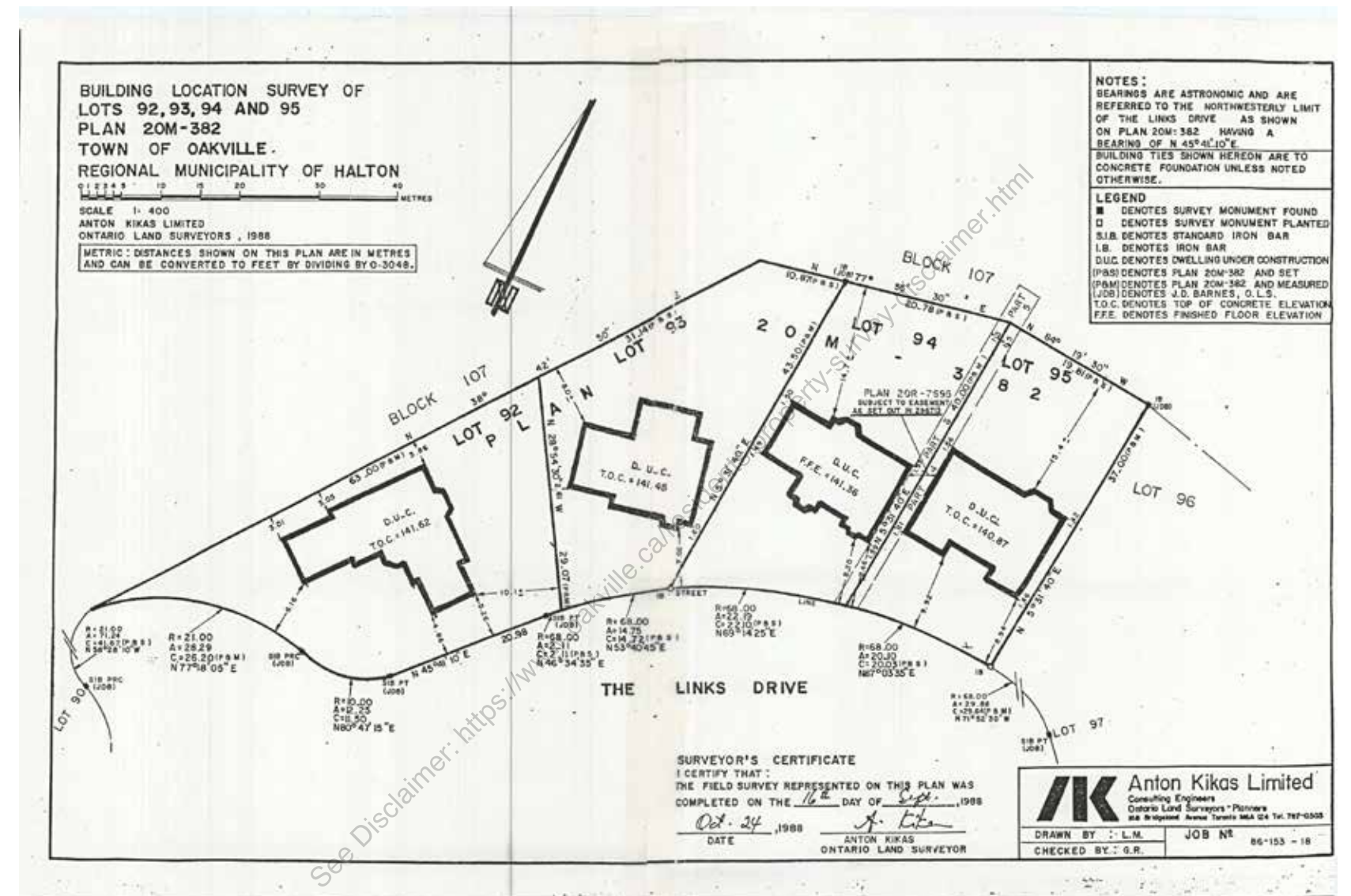
Fairway Hills Association Fee: \$1000/year

Inclusions: Built-in dishwasher, fridge, gas stove, washer, dryer, all elfs, all window coverings, all pool equipment, gdo

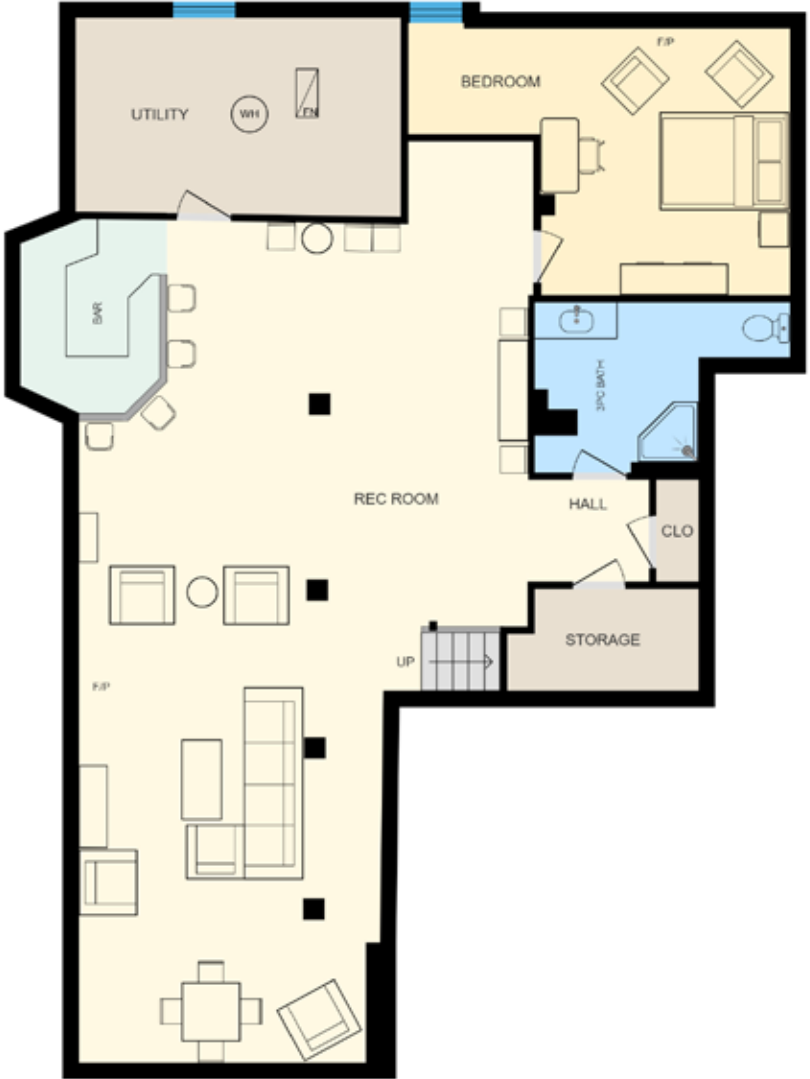
Exclusions: Dining chandelier, outdoor gazebo



SURVEY



FLOOR PLANS



All room dimensions and floor areas must be considered approximate and are subject to independent verification.



RINA DIRISIO
SALES REPRESENTATIVE
LIFETIME RESIDENT OF OAKVILLE

CELL 416.804.4347
EMAIL RINA@RINA.CA

251 NORTH SERVICE ROAD WEST
OAKVILLE ONTARIO L6M 3E7

Royal LePage Real Estate Services Ltd., Brokerage

RINA.CA

WE SELL REAL ESTATE BUT BETTER.



Information in this brochure is deemed accurate but not guaranteed.
School boundaries may change for upcoming school year.